



Welcome to Envision by WorldStrides Family Labs!

Dear Scholar,

Developing leadership skills is crucial to academic and career success. Get ready to take charge of your leadership learning by studying past leaders, self-reflection, and goal setting.

During this lesson, you will learn about a few impactful leaders of the past and present and challenged to apply these lessons to your own leadership development. As a leader, you will need to have a keen understanding of your own strengths and the things that are important to you. These profiles and guided reflections will give you tools you need to be a successful leader and communicator.

The final project will allow you to express your creativity and new knowledge as you seek to define leadership for yourself. Do you want to make a TikTok or write poetry? Are you interested in movie making or vlogging? You have the freedom to explore a variety of platforms and media as you complete your project and reflection.

Leadership is a valuable skill, and we hope this Family Lab gives you tools to continue to grow into the leader you are meant to be!

Good Luck!

Matt Castrina
Vice President, Educational Experience
Junior National Young Leaders Conference



Know Before You Go!



Learning about leadership is important for success. Throughout this lesson, you will complete self reflection and learn about historical and contemporary leaders. Knowing your definition of leadership will help guide you.

Step 1: Define leadership for yourself.

What is your definition of leadership?

Use the below to write your own definition.

Want to Learn More?

Check out the links below:

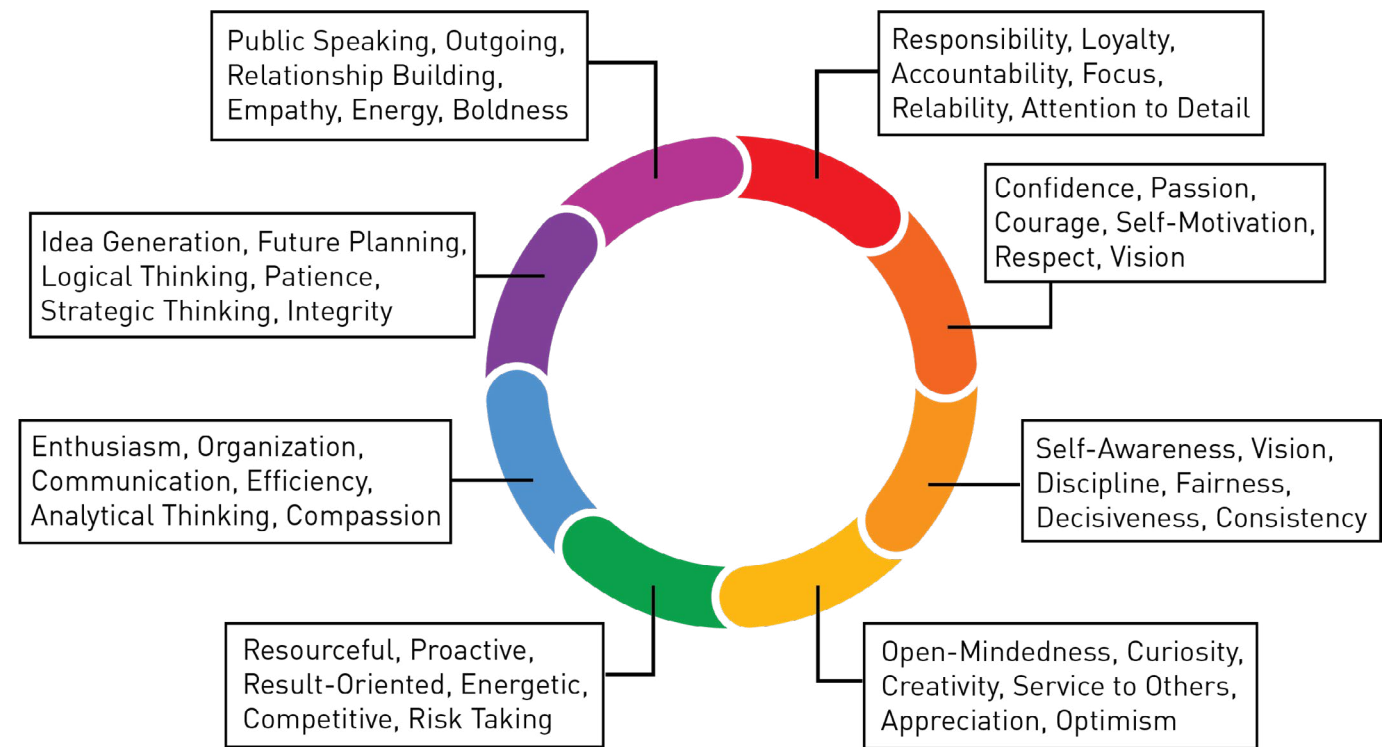
- [What is Leadership?](#) Kevin Kruse (Forbes)
- [Everyday Leadership](#) Drew Dudley (TED Talk)

Leadership Color Wheel

Step 2: Read about the Leadership Color Wheel and complete the reflection below.

Take a look at the wheel below—which group of leadership traits fits you most? Do you fit into some categories and not others?

Like a color wheel, the traits on this wheel complement each other. You can use these complementary traits to your advantage when practicing leadership and working with others. For example, if you are more of a Red leader, it could be valuable to seek help from someone who possess more Green traits. Or, it could be helpful to work on developing some Green traits yourself.



Look at each color and category above and decide what group of traits fits you the most. Then look at the complementary color and reflect on how you could practice some of those traits as well. This will make you a more effective and well-rounded leader.

Key Leadership Attributes

Step 3: Click on each of the leadership attribute cars below to learn more about each of these key skills.

Attribute Reflection

Which attribute would you consider a strength?

Which attribute could be an area of improvement?

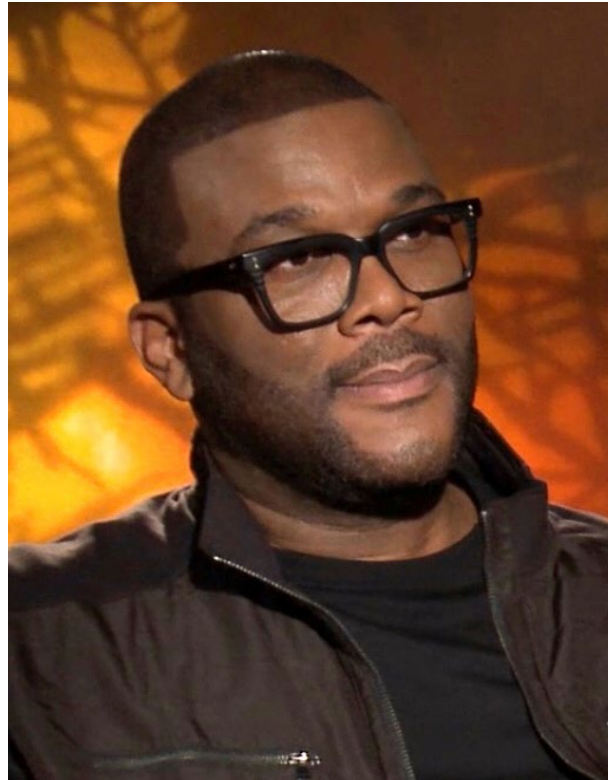
Reflect on a time you demonstrated one of these attributes. What happened?
How did you demonstrate your leadership ability?

Let's Get Started!

Step 4: Read the Profiles in Leadership and complete the Reflection Questions and Guided Practice.

Over the next several pages, you will have the opportunity to read profiles of contemporary and historical leaders who made their mark on the world. As you read their profile, **notice the key skills and attributes that helped them in their leadership journey.** After each profile, you will complete a short reflection that will help inform your definition of leadership and guide your final project.

Profiles in Leadership



Tyler Perry Being Interviewed (18 October 2016)
Photograph by AMFM Studios LLC,
distributed under a [CC-BY 3.0 license](https://creativecommons.org/licenses/by/3.0/)

Tyler Perry 1969–

Over the last two decades, Tyler Perry has risen to stardom in the entertainment industry. From homeless playwright to billionaire, his life is one worthy of an Academy Award for Best Picture. Perry overcame extensive obstacles, growing up in a poverty-stricken household, scarred by abuse.

At a young age, he began to write down his daily thoughts and experiences in a series of soul-searching letters to himself. These letters inspired Perry to start writing his first play in 1992. Though success was not immediate, his first play would sell out a local run and force the production to move to the acclaimed Fox Theatre in Atlanta. Perry began building an empire that has attracted many diverse audiences and

built communities. Perry is now the mastermind behind 17 feature films, even taking on the lead actor role at times. In 2015, he established himself as the first African-American to outright own a major film production studio and turned it into the largest in the United States.

The 330-acre studio is complete with 12 soundstages named after highly accomplished African-Americans in the entertainment industry. Through the opportunities provided by Tyler Perry Studios and his partnership with the Oprah Winfrey Network, Perry provides over 400 jobs to the Atlanta community.

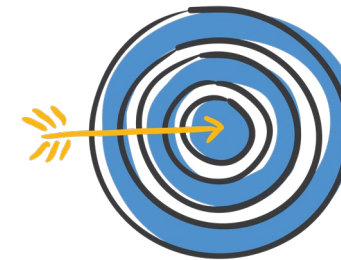
Key Leadership Traits

- Creativity
- Motivation
- Inspiration
- Entrepreneurship
- Innovation

Reflection Questions

Think of a time you overcame an obstacle and use the space below to answer the reflection questions:

- *What was the obstacle?*
- *What steps did you take to work through the challenge?*
- *If you were to start keeping a journal of your life experiences, what would you write about? Is this something you would consider?*



Guided Practice

Picture yourself in 10 years.

- *Where do you want to be?*
- *What do you want to be doing?*

Write two goals for yourself in 10 years. Then write two steps you will need to take to get there.

Profiles in Leadership



Ella Baker, c. 1944
Everett Collection/Shutterstock.com
Accessed from [Encyclopædia Britannica](https://www.britannica.com)

Ella Baker 1903–1986

Ella Baker is an unsung hero of the fight for racial and economic justice and equality. She is remembered for having *“the audacity to dream big.”* Her passion for activism was fueled by her grandmother, a former slave, whose stories about resiliency in the face of racism and injustices inspired her.

After graduating class valedictorian from Shaw University in Raleigh, NC, Baker moved to New York City. It was here she began joining social activist organizations. As an active member of the NAACP, she became inspired by the Bus Boycott in Montgomery, AL, and co-founded the “In Friendship” organization to raise money to fight against Jim Crow Laws.

On February 1st, 1960, Baker was leading voter registration campaigns in Atlanta, when a group of black college students from North Carolina A&T University staged a sit-in protest after being denied service at a Woolworth lunch counter. Baker viewed young, emerging activists as a resource and an asset to the movement. She became a leader in the Student Nonviolent Coordinating Committee (SNCC). By 1961, the SNCC took on the passionate duty of leading the well-known “Freedom Rides” that sought to test Supreme Court decisions to make segregation in transportation unconstitutional. Her legacy of leadership and movement is honored today. Her dream of exercising our collective voices to influence policy and laws that impact our lives remains an initiative of the Ella Baker Center for Human Rights, named in her honor.

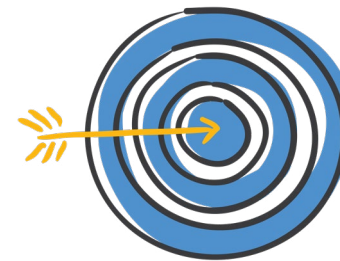
Key Leadership Traits

- Activism
- Dedication
- Organization
- Empathy
- Resilience

Reflection Questions

Ella Baker was known for her ability to see her dreams through to action. Use the space below to answer the reflection question:

- *What are some things you hope to see change in the next 10 years?*



Guided Practice

Imagine there are people that have been inspired by your leadership, and they want to honor you by naming a center after you. *What would your center be named?*

The _____ Center for _____

What leadership skill(s) or attribute(s) would you want to be honored for displaying passionately, and why?

Profiles in Leadership



Naelyn Pike testifies to Save Oak Flat before a Congressional committee (March 12 2020) Photo by Steve Pavey Accessed from [Censored News](#)

Naelyn Pike 2001–

Naelyn Pike is a teenage activist from San Carlos, Arizona. Passionate about her culture, identity, and tribal sovereignty, she advocates for Indigenous Rights and environmental protection. She works closely with her grandfather and mother to lead Apache Stronghold to preserve the sacred Apache sites.

Pike is a strong advocate for the engagement of young people

in activism. She has testified for the preservation of land for a U.S. House of Representatives Committee on Natural Resources and has given numerous talks on the importance of environmental advocacy. Her culture, family, and strong conviction help her inspire others to take action and protect Indigenous land and natural resources.

Key Leadership Traits

- Compassion
- Activism
- Organization
- Public Speaking
- Integrity

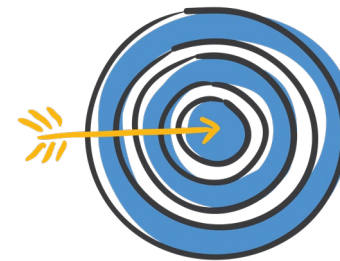
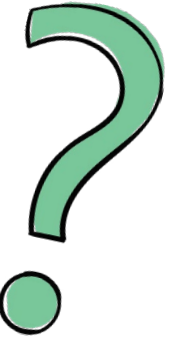
Check out [DoSomething.org](https://dosomething.org) and get inspiration for campaigning for positive change. DoSomething is a global non-profit organization with the goal of motivating young people to make positive change both online and offline through campaigns that make an impact.



Reflection Questions

Talk to your family about something you are passionate about and use the space below to answer these reflection questions:

- *How does your identity inspire you to take action?*
- *If you were to lead an organization with members of your family, what would you do?*



Guided Practice

Pick a topic from the list below and write a short (150 words or less) on the topic. Make sure to practice, then ask someone close to you if you can read it for them.

Profiles in Leadership



Shirley Chisholm 1924–2005

Born in Brooklyn, New York, Shirley Chisholm was an educator, author, and American politician. The daughter of immigrants from Guyana and Barbados, Chisholm began her public service career working in education and advocacy.

In 1968, she was elected to the U.S. House of Representatives to represent New York's 12th Congressional district. Chisholm was the first Black woman elected to Congress. She would go on to serve in Congress for seven consecutive terms. As a Congresswoman, she worked hard for those she represented, even working with political rivals to pass new legislation.

After a successful career in Congress, Chisholm launched a campaign for President in 1972 and was the first Black

candidate for a major party presidential nomination. She was also the first woman to run for the Democratic Party nomination for President. During her presidential campaign, she faced discrimination and even threats. She continued to persevere and worked throughout the rest of her career to promote tolerance and collaboration.

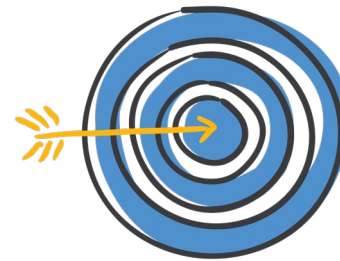
Key Leadership Traits

- Dedication
- Empathy
- Resilience
- Public Speaking
- Inspiration

Reflection Questions

Think about an obstacle you have encountered and use the space below to answer these reflection questions:

- *What was the obstacle you worked to overcome?*
- *What lessons did you learn from the experience?*
- *How can you practice empathy in everyday life?*



Guided Practice

Think of the last time you got into an argument with a member of your family.

- How could you have practiced empathy to see things from their point of view?
- Could you explain your perspective to them?
- Do you think this would help resolve the conflict?

Profiles in Leadership



Jim Goodnight speaking at the World Economic Forum (15 April 2009), Photo by World Economic Forum Accessed from [Wikimedia Commons](#)

Jim Goodnight 1943–

While in college at North Carolina State University, Jim Goodnight created a statistical analysis software to analyze agricultural research data. The company, SAS, quickly grew and is now one of the largest software companies nationwide. More than building a profitable company, Goodnight's values and commitment to work-life balance have led to SAS being consistently ranked as one of the best places to work.

Goodnight's work-life balance philosophy is exemplified in SAS employee programs such as free on-site health care, counseling, physical therapy and personal training. SAS employees also have access to state of the art dining facilities and deeply discounted child care. These programs have led SAS to have a very low rate of employees leaving the company and talented people worldwide

looking to apply for the few openings they have. While salaries and pay could be higher, Goodnight found that everything runs more smoothly when employees are well taken care of.

Goodnight met his wife Ann in their time as college students in Raleigh, North Carolina. Ann serves as the Director of Community Relations at SAS. The Goodnights' commitment to education led them to open a school in Cary, North Carolina. Additionally, they have supported various education non-profits and education exhibits at local museums.

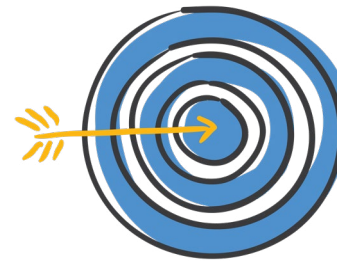
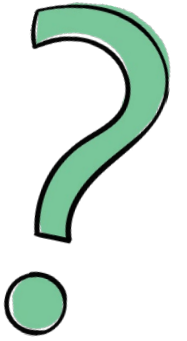
Key Leadership Traits

Innovation
Entrepreneurship
Team Building
Dedication
Inspiration

Reflection Questions

Reflect on the brands you are loyal to (Apple, Nike, etc.) and use the space below to answer these reflection questions:

- *What do they do that keeps your business?*
- *Do they give back to others?*
- *Does this influence your perception of them?*



Guided Practice

Imagine yourself as a successful entrepreneur and use the space below to think about the type of business would you develop.

- *What values would you want your brand to reflect?*
- *How would you give back to your community as a business leader?*

Leadership Self-Reflection

Now that you have read about some contemporary and historical leaders, take some time to reflect on what leadership means to you.

Has your definition of leadership changed after reading these profiles? If so, write your new definition below.

Now that you have reflected on your strengths, take some time to consider the things on which you can improve. Write one area of improvement below.

Now that you have learned about some important traits for leadership, what traits do you think make you a good leader? Write them below.

Final Project Guidelines

Step 5: Read the project guidelines below!

Make sure you understand all elements of the project and take time to plan before getting started.

What skills or attributes are needed to be an effective leader? Think of a real leader you admire—they can be a historical figure or someone you know personally, like a parent or a teacher. Ask yourself, what makes this person a leader? What leadership traits do they possess?

In this project, you will be defining leadership for yourself and profiling a leader whom you admire and identifying three leadership traits they possess.

Use the profiles in this workbook as inspiration. However, this project can be as creative as you like. Do you love making videos? Posting on Instagram or TikTok? Are you an artist or writer? Do you love public speaking or writing persuasive essays?

This project is your opportunity to be creative and explore leadership in new ways. **Your project should profile a leader who you admire, highlight three leadership traits that they possess, and define leadership for yourself.** How this information is presented is up to you!

Some examples include:

- Writing a creative essay defining leadership and detailing leadership traits exhibited by a family member.
- Filming a one-minute video about a famous leader and the traits they possess to be posted to a social media site like Instagram or TikTok.
- Designing an infographic designed to be posted to a social media site like Facebook or Instagram.



Congratulations!

Congratulations on completing the Envision Family Lab: Defining Leadership!

You have learned about contemporary and historical leaders and some of the leadership traits that helped them succeed. Through reflection on your own leadership, you have developed your own understanding of what it means to be a leader. This is a good foundation to continue to learn more.

Connect with Us



@envisionexperience



@envisionexp



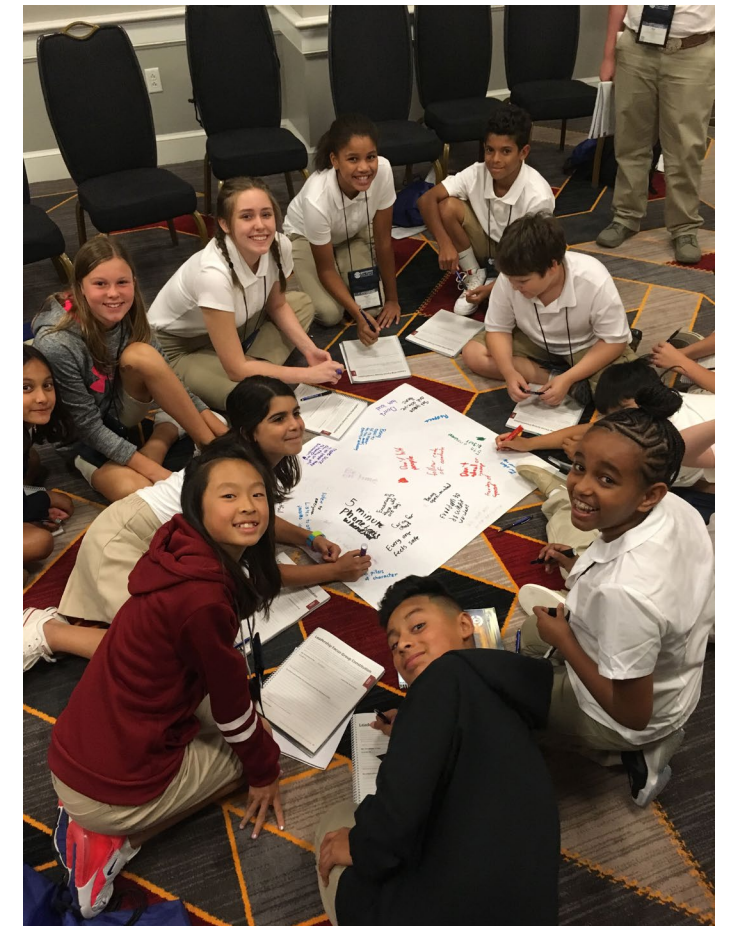
Envision Experience

Show What You Know!

Now that you have defined leadership for yourself, look for opportunities to continue to practice your leadership traits in everyday life.

Be proud of your work! Be sure to share your project with your friends and family.

We encourage you to share your creation and showcase your hard work with Envision by WorldStrides on social media. Connect with us on Instagram, Twitter, and Facebook by tagging Envision and using hashtag #EnvisionFamilyLabs.



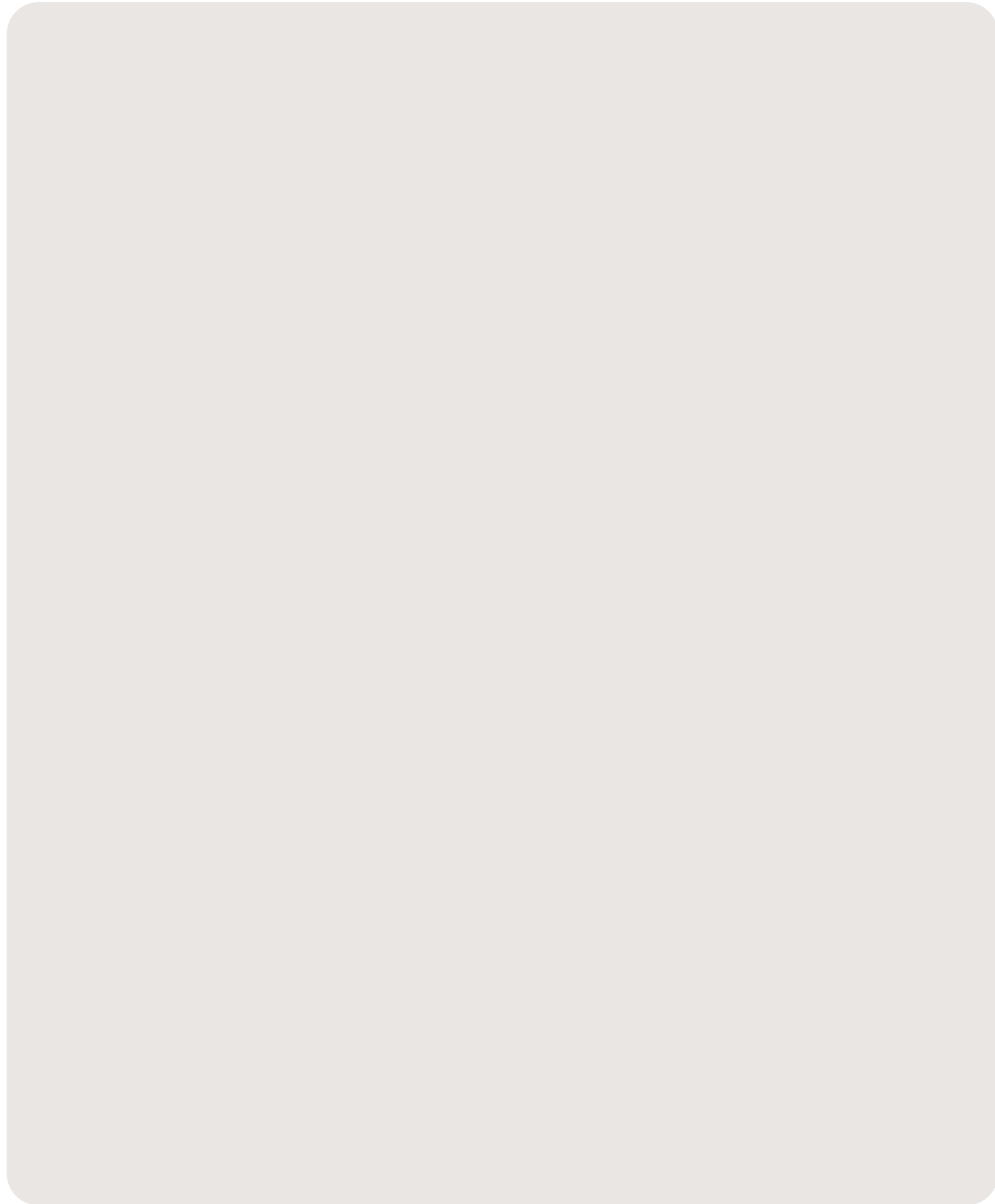
Tell Us What You Think

We hope you enjoyed this Family Lab! We encourage you to share it with friends and family. We would love to get your feedback!

Please complete this optional two-minute survey and provide us your thoughts. Thank you!

[Click here to complete the survey!](#)

Notes



Resource Page

Kruse, Kevin. (9 April 2013). *What is Leadership?*. Forbes. <https://www.forbes.com/sites/kevinkruse/2013/04/09/what-is-leadership/?sh=bbda7dd5b90c>

Dudley, Drew. (September 2010). *Everyday leadership* [Video]. https://www.ted.com/talks/drew_dudley_everyday_leadership?language=en

